



# Access Information

Updated March 2026



[www.rosslynchapel.com](http://www.rosslynchapel.com)

Rosslyn Chapel Trust is a charity registered in Scotland. Number SC024324





## Introduction

This Access Guide should be read alongside the general information about visiting Rosslyn Chapel on the **Visit** section of the website.

Here, we offer more specific information on access across the site to help disabled visitors plan a trip.

If you have any questions, or specific needs, please do not hesitate to ask a member of staff when you arrive and we will do our best to help you with any particular access issue.

We look forward to welcoming you.

## Location

Rosslyn Chapel is located in the village of Roslin, in Midlothian, around 7 miles from the centre of Edinburgh. The Chapel is on Chapel Loan, around 240m/264 yds from the nearest bus stop. For specific travel information please see the **Getting here** section on our website.





## Arrival

If driving to the Chapel, on Chapel Loan take the first entrance on the right to the main carpark. At the far end, there are 5 parking spaces for disabled drivers; these around 55m/61 yds from the entrance to the Visitor Centre. There is a gradual upward slope from the carpark to the Visitor Centre with benches just before you reach the entrance. Although it is not possible to park directly outside the Visitor Centre, a passenger can be dropped off and collected here and the driver can park in the carpark.

Taxis will usually drop visitors off just outside the Visitor Centre.

Visitors arriving by coach or minibus will normally come in to the overflow carpark, which is 30m/32 yds from the Visitor Centre.



## Visitor Centre

The Visitor Centre is a modern building, opened in 2012, and all on one level. The entrance has a glass sliding door, 87cm/35 inches wide, which will automatically open as you approach. The entry desk has a lowered section at the end and staff will direct you there if that is helpful.

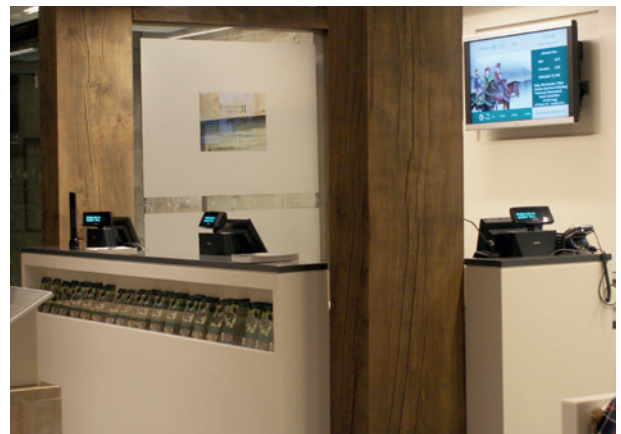
There are seating areas throughout the Visitor Centre and we have one manual wheelchair, which can be borrowed on request.

Disabled visitors pay our reduced admission charge and if you need a carer or assistant to accompany you, that person can visit free of charge.

Please remember that we only allow assistance dogs into the site and other dogs are not allowed into the Visitor Centre, Chapel or Grounds.

Please ask at the desk about our handheld guides with BSL and audio-described tours.

Take time to look round the Visitor Centre which is full of information about the Chapel with interactive screens, story hoods and a display about The Da Vinci Code.





## Toilets

There are 5 gender neutral toilets in the Visitor Centre; the first cubicle on the right is a little wider than the others. There is an accessible toilet, providing wheelchair access and a red alarm cord, to call for help, if needed.

The lights come on automatically when you enter the cubicle and there are flashing lights to warn if the fire alarm is activated.





## Gift Shop

There is ample room around the shelving units so a wheelchair user should be able to move around the Gift Shop easily and a member of staff will be able to help retrieve any out-of-reach items.

The main point for shop purchases has a lowered section of counter, which is 76cm/30 inches high.



## Coffee Shop

The Coffee Shop is at the far end of the Visitor Centre and overlooks Roslin Glen. Food and drinks are ordered at the counter and brought to your table by staff. The Coffee Shop tables have 70cm/27 inches clear height underneath and has a mix of chairs with and without arms. The menu is displayed on a blackboard and cakes, scones, filled rolls and panini can be found in the chiller beside the counter.

Products suitable for vegan or gluten free visitors will be clearly marked.

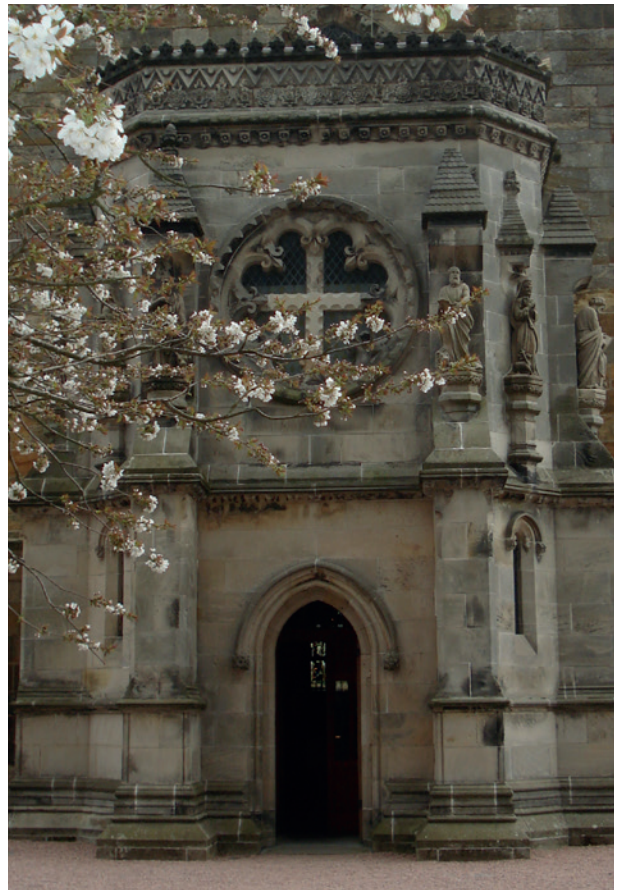


There are some tables and chairs on the outside terrace which is accessible via a glass door, which will swing open (opening outwards) as you approach.



6





## The Chapel

The main entrance is by the west door in the Baptistry and there is a wooden ramp leading into the Chapel.

Please remember that in a building which is nearly 600 years old, the floors can be uneven.

In each timeslot, a Chapel Guide will give a short talk about the building's history and main features. The Guide will use a microphone, which connects to a hearing induction loop. Visitors are welcome to sit on one of the pews for the talk or at any point during their visit.



+



+



+



7



+

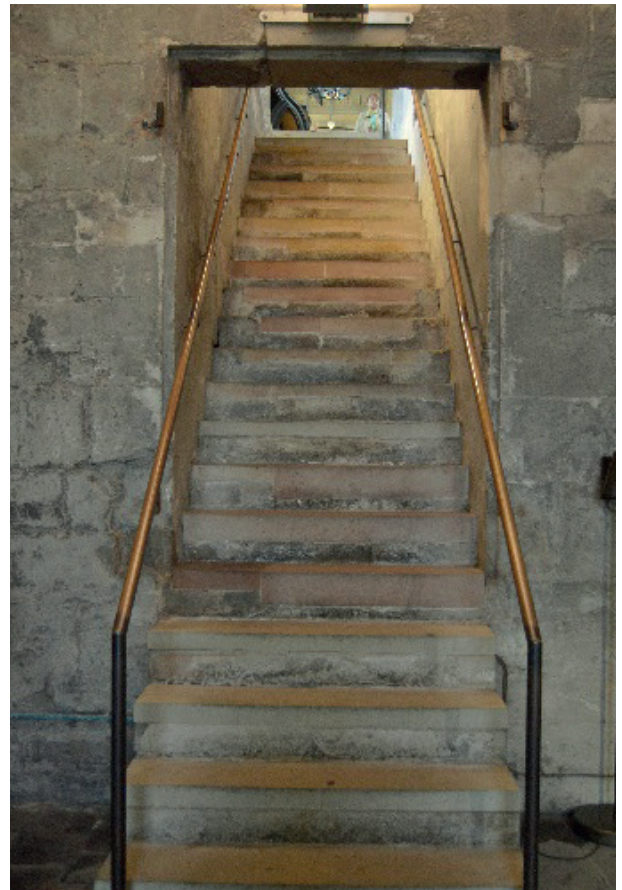


+



+





The Chapel interior is largely on one level with one step leading into the Lady Chapel. There are 26 stairs leading down to the Sacristy, which are very steep and, although there are two handrails, these stairs are not recommended for visitors with mobility problems.

Photographs of the Sacristy can be shown to visitors who cannot access this area.





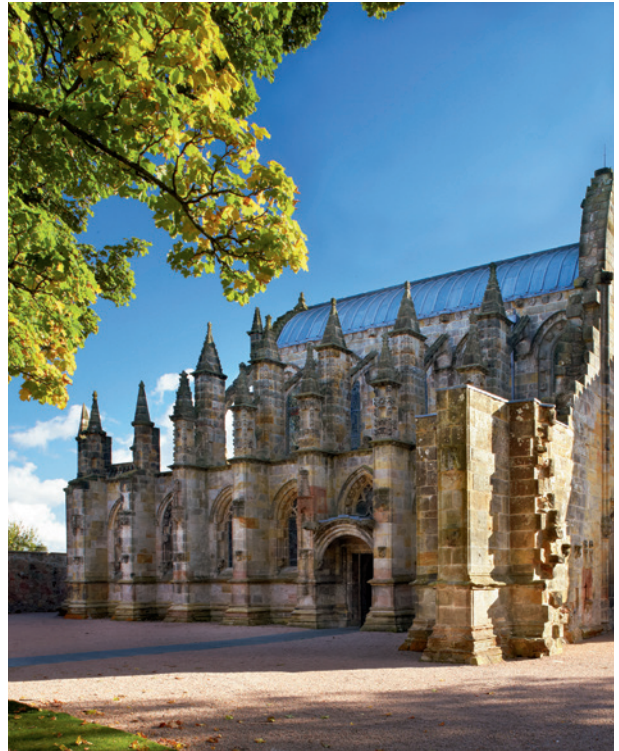
## Chapel Grounds

The grounds around the Chapel are laid with gravel, contained in a plastic honeycomb system which is designed to keep the gravel in place and make it easier for users of wheelchairs, walkers and buggies to enjoy the exterior. There are wooden benches around the grounds, which visitors are welcome to use to enjoy the views of the Chapel.

## Further Information

Follow our Autism Visual Story on our website [rosslynchapel.com/wp-content/uploads/2024/11/256\\_Rossllyn\\_Autism\\_Guide\\_v4-web.pdf](https://rosslynchapel.com/wp-content/uploads/2024/11/256_Rossllyn_Autism_Guide_v4-web.pdf)

Enjoy a 360-degree tour of the Chapel, before you visit, also on the website [rosslynchapel.com/visit/virtual-tour/](https://rosslynchapel.com/visit/virtual-tour/)



If you would like further information, or to discuss your particular access needs, please contact us [mail@rosslynchapel.com](mailto:mail@rosslynchapel.com) | 0131 440 2159